
Removing a broken hex from implant carrier

*Implant and screw remover
kit instructions for use*



Clinical case
Dr. Jesús Pato Mourelo

Removing a broken hex
from implant carrier

Galimplant Implant & Screw Remover Kit



Contains 4 removers labeled with numbers according their specific purpose.



Remover # 1

Designed to extract broken implant carrier hex and stripped or broken screws.

Remover # 4

Designed to remove 2mm (diameter) internal connection dental implants. Don't exceed torque over 200Ncm.

Remover # 2

Designed to extract stripped screws.

Remover # 3

Designed to remove 1.6mm (diameter) internal connection dental implants. Don't exceed torque over 100Ncm.

Clinical Case: **The Problem**

Excessive torque during implant placement (**>50Ncm**) or **excessive lateral lever force** may cause **implant carrier hex breaking**.

Implant carrier hex is designed to break to avoid damage implant connection when torque is excessive.

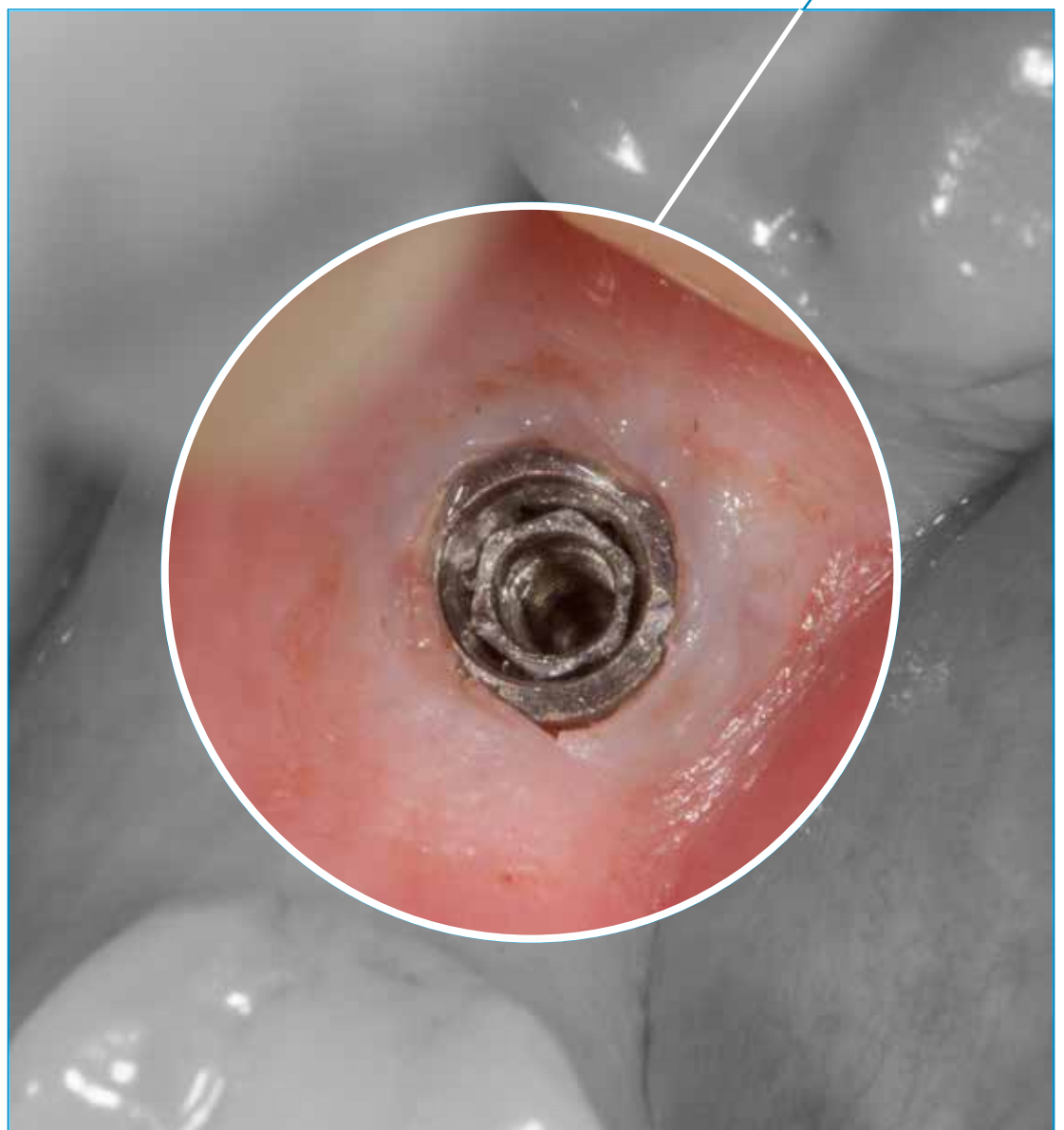
Implant Carrier



Broken Implant Carrier



*Broken hex
from carrier
stuck inside
implant
internal
connection*



Removing a broken hex
from implant carrier

Clinical Case: **The Solution**

Use the **remover number # 1** to remove the broken hex, otherwise you can attach a **torque wrench adapter** if is necessary.

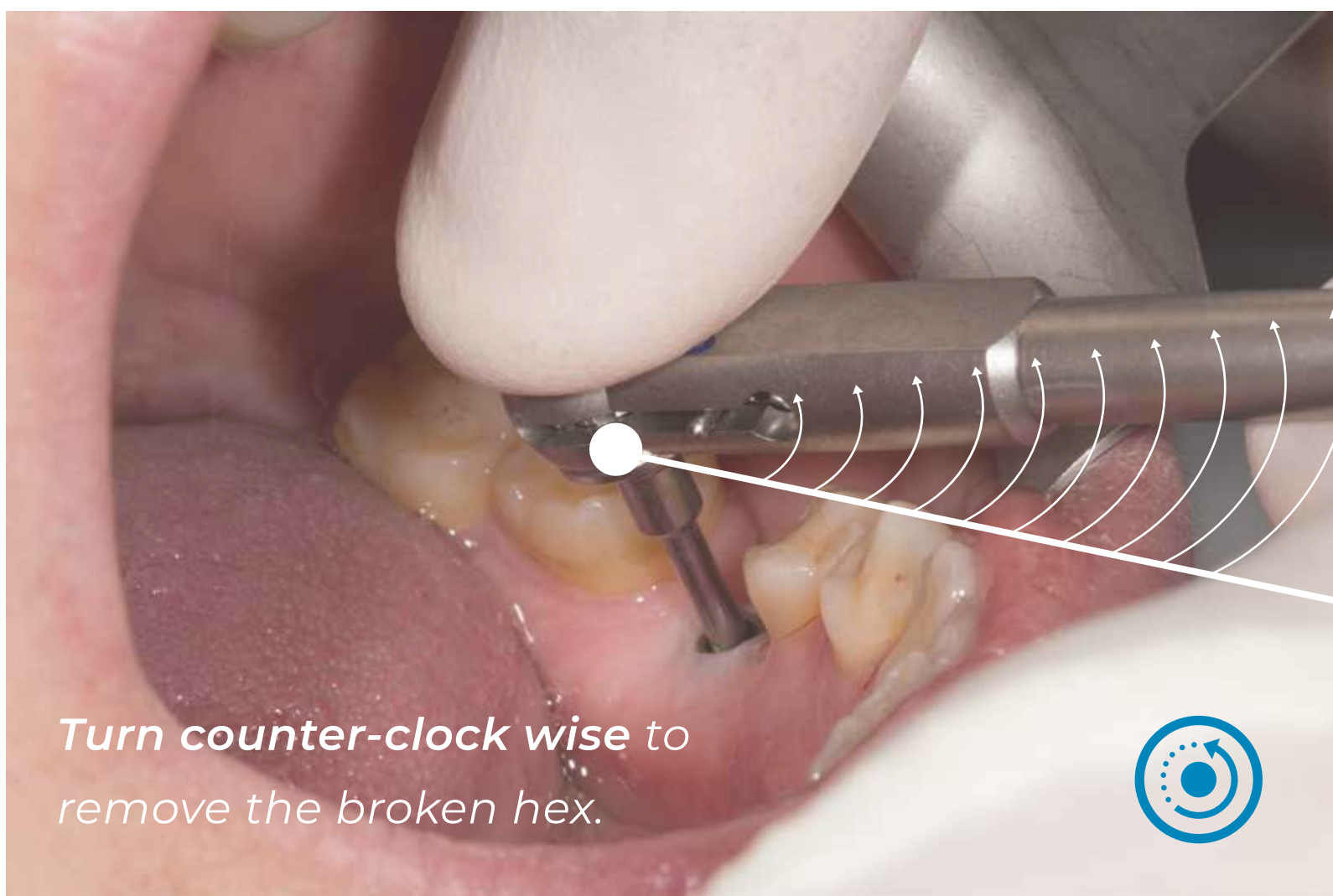
Remover # 1



Torque wrench adapter



Torque wrench



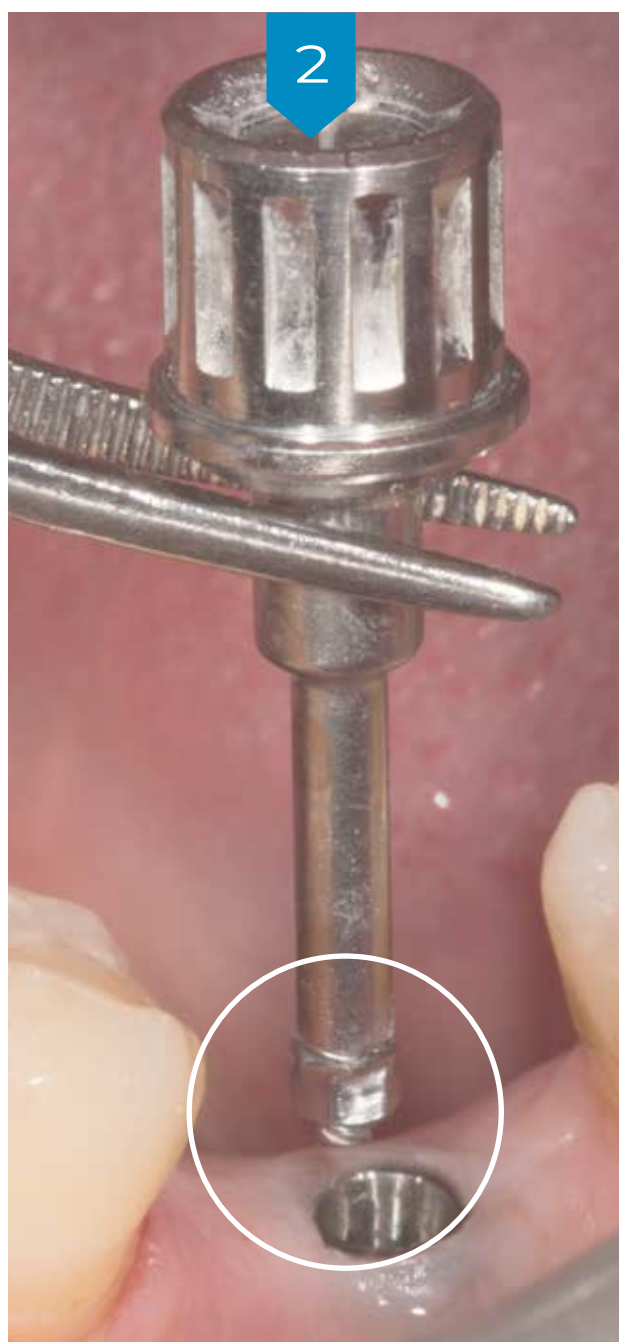
*Turn counter-clock wise to
remove the broken hex.*



Removing a broken hex
from implant carrier

Clinical Case: **The procedure**

*Remove the broken hex after coupling with
the remover (number 1).*



Removing a broken hex
from implant carrier

Clinical Case: **Final check**

After remove the broken hex please
check that there are no remains
inside the implant internal connection.

